

FibroTex

Polyester Needle Punched Non Woven Geotextile





Non Woven Geotextile

Fibromat® Geotextile is made from the highest quality polyester yarns which are needle punched to form a strong fabric that retains its dimensional stability, adding years to the life of any roadways, railroads, landfills or civil / environmental engineering projects. Used in subsurface drainage, separation, stabilization, erosion control and cushioning application.

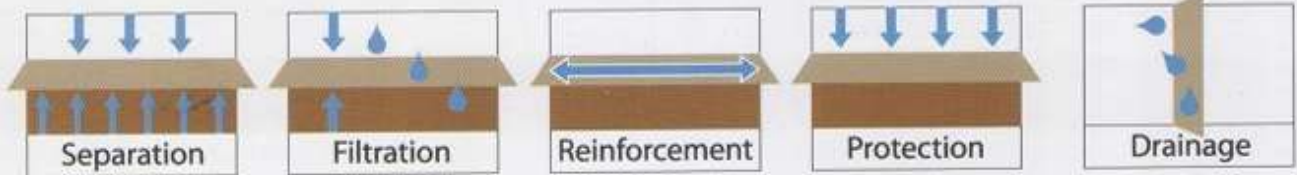
Fibromat® Geotextile is a product made through a particular process, it is properly designed to meet physical / hydraulic characteristics such as textile strength, tearing strength for the purpose of civil works, thus there is a few weight difference and void spaces between fiber textures and it's very even, further more; Apparent opening size (AOS) is also equally formed to get perfect hydraulic function.

Fibromat® Geotextile is made of 100% polyester, it has excellent resistant to ultraviolet (UV) degradation, biological and chemical environment found in the soil.

Fibromat® Geotextile extracts no environmental contamination and it maintains stability under extreme temperature. The placement of **Fibromat**® Geotextile between the soft subgrade and the granular may provide one or more of the following functions.

- A filter to allow water but not soil to pass through.
- A separator to prevent the mising of the soft soil and the granular material.
- A reinforcement layer to resist the development of rutting and difference settlement.



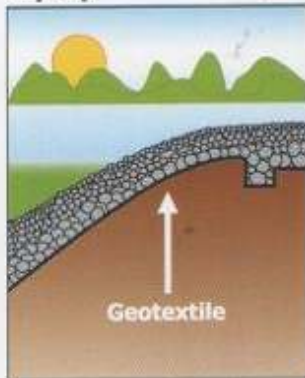


Features

- **Filtration:** Provides a permanent mechanical and hydraulic filter stability as it retains fine particles when water passes from fine-grained to coarse-grained soil.
- **Drainage:** Provides water drainage and gas venting in the plane of the geotextile.
- **Reinforcement:** increases soil shear strength by providing bonding mechanism of the geotextile-soil system to improve the soil quality and structural stability.
- **Cushion / Protection:** Allows permanent protection of synthetic sealing systems (geomembranes) against mechanical damage during installation and after completion of construction.
- **Waterproofing:** Acts as a support material for impregnations with bitumen or plastic-modified sealing materials.
- **Separation:** Permanently prevents the mixing of two materials.



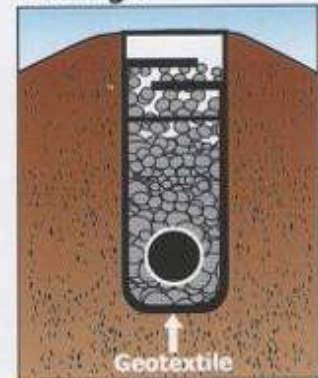
Riprap



Separation



Drainage

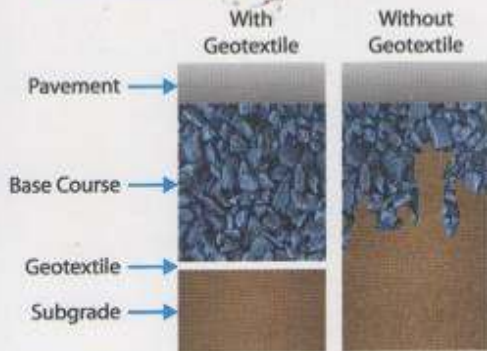


Common Applications

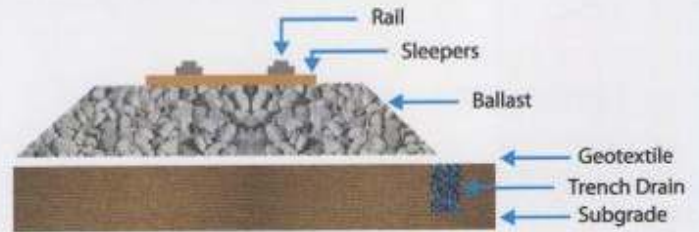
- Asphalt Overlay
- Foundation Drains
- Green Roofs / Roof Gardens
- Lightweight Separation Under Concrete Pavers
- Sports Fields
- Segmental Retaining Wall Drainage System
- Subsoil Drain (Drainage Geotextile)
- Geomembrane Cushion
- Landfill Leachate Collection
- Gas Venting
- Rip-rap Revetment
- Channel & Shoreline Erosion Control
- Sludge Dewatering
- Stream Crossing
- Railway Construction
- Road Embankment
- Soil Separation & Filtration
- Landfill & Waste Containment
- Sub-base Stabilization
- Soft Ground Stabilization
- Reclamation Works
- Sediment Control & Silt Control



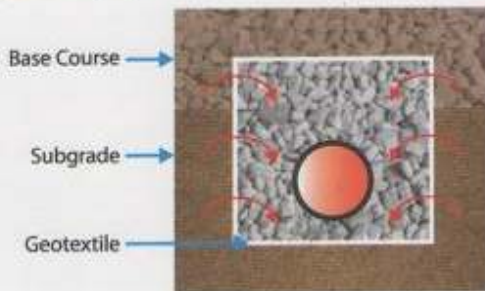
Road construction



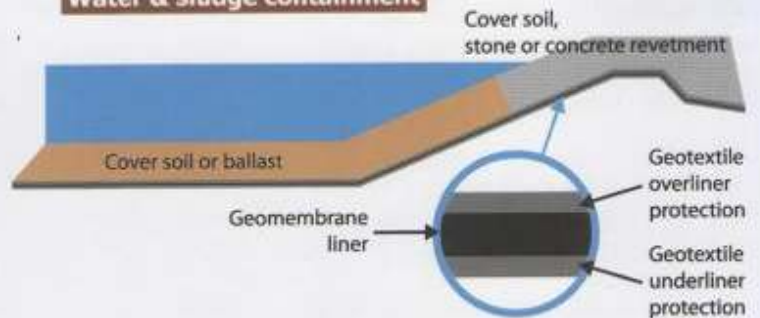
Railway track construction



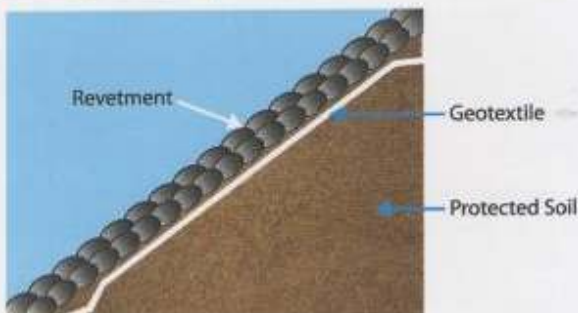
Drainage



Water & sludge containment



Coastal protection



Water containment systems



The information contained herein is to the best of our knowledge accuracy, but since the circumstances and conditions in which it may be used are beyond our control, we do not accept any liability for any loss or damage, however arising, which results directly or indirectly from use of such information nor do we offer any warranty or immunity against patent infringement.

MTS FIBROMAT (M) SDN BHD (491502-K)

Wisma Fibromat, No. 574 A, B, C, Jalan Samudra Utara 1, Taman Samudra, 68100 Batu Caves, Selangor D.E., Malaysia
 Tel: +603-6189 9999, +603-6188 4300 Fax: +603-6189 7559, +603-6187 9775
 enquiry@fibromat.com.my www.fibromat.com.my